



**AKEL LOGAN SHAFER**  
ARCHITECTS AND PLANNERS

704 Roselle Street / Jacksonville, Florida 32204-2942  
Telephone (904) 356-2854 / Fax (904) 356-4010  
www.akellogan.com

CONSULTANTS

**EXTERIOR RENOVATIONS**  
**BB&T PARKING GARAGE**  
100 N. HOGAN STREET  
JACKSONVILLE, FLORIDA

MARK	DATE	DESCRIPTION
ISSUE:	JANUARY 15, 2009	
PROJECT NO:	0713	
CAD DWG FILE:	0713 DATABASE	
DRAWN BY:	RPG	
CHECKED BY:	GES	

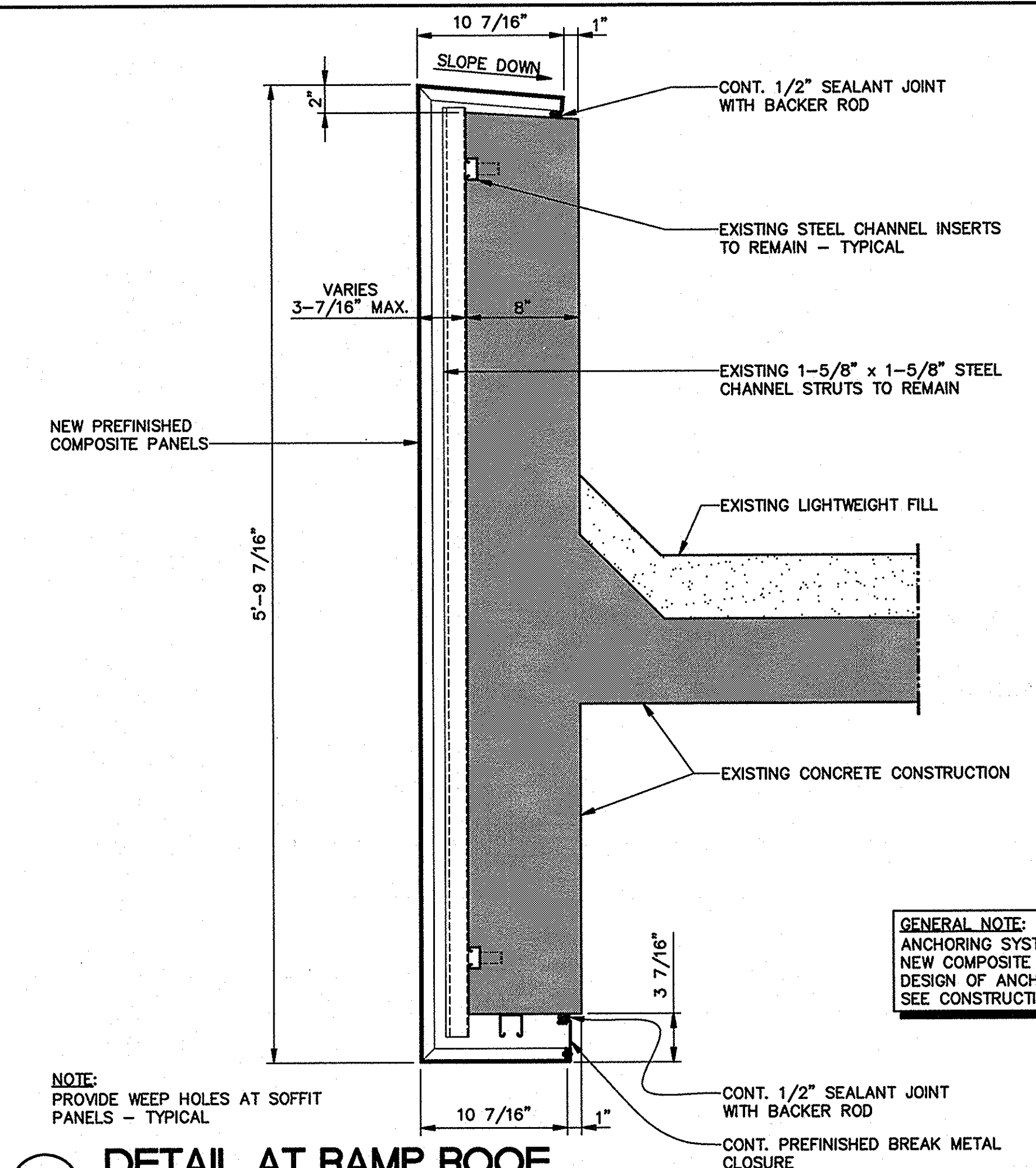
BID DOCUMENTS

SHEET TITLE

**TYPICAL DETAILS**

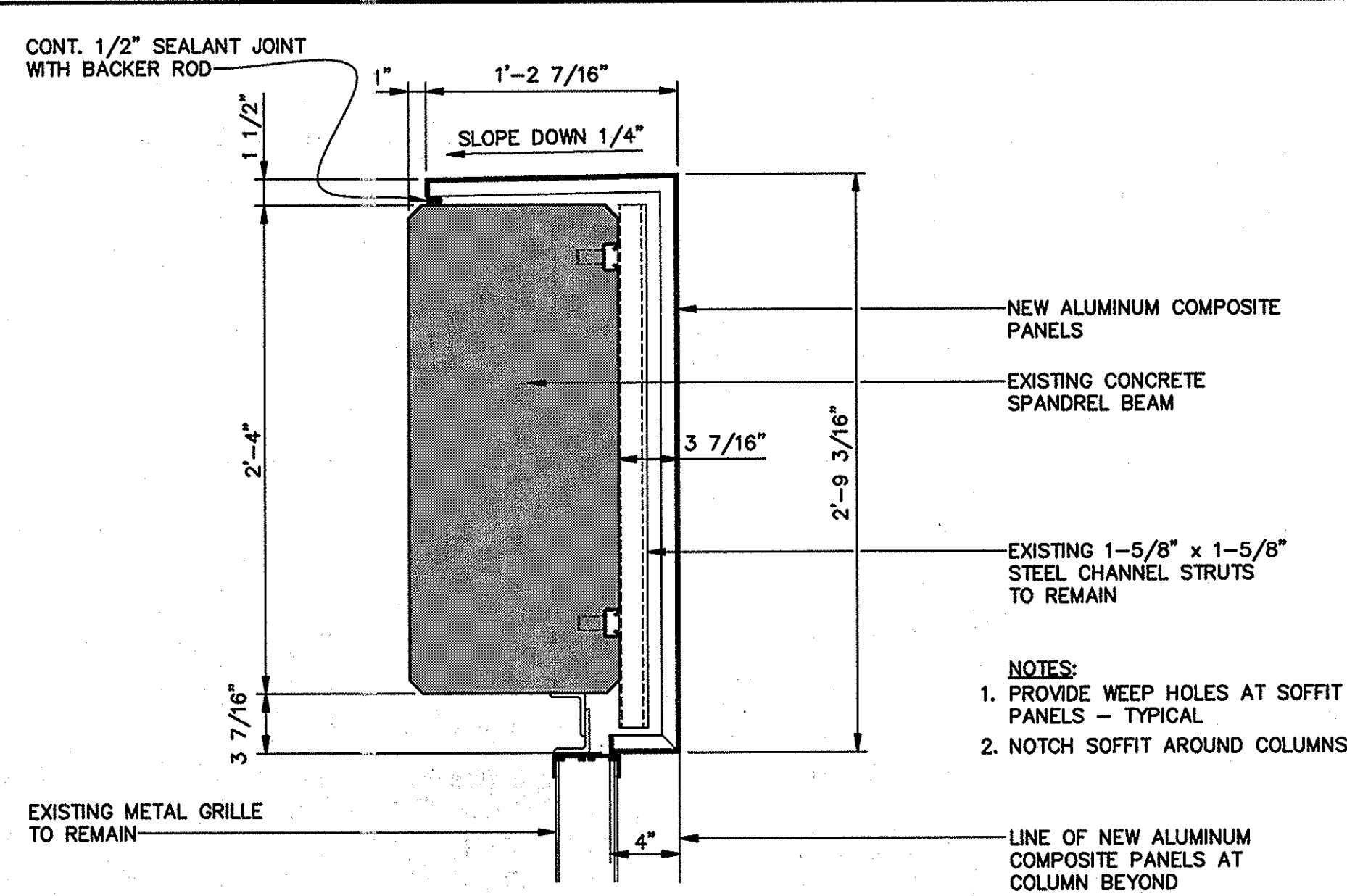
SHEET NUMBER

**A104**



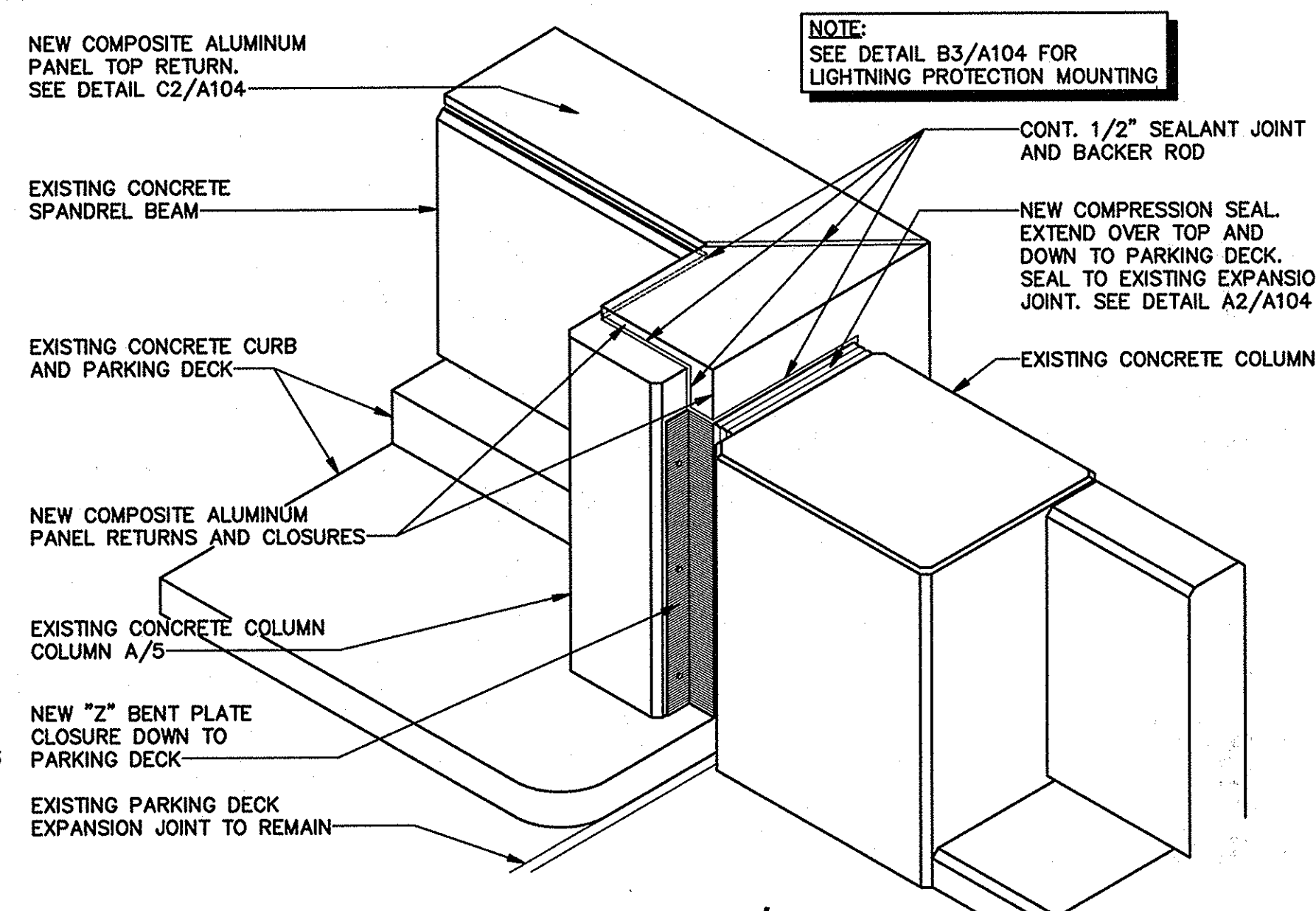
**A1** DETAIL AT RAMP RAILING

SCALE: 1-1/2" = 1'-0"



**C2** TOP SPANDREL BEAM DETAIL

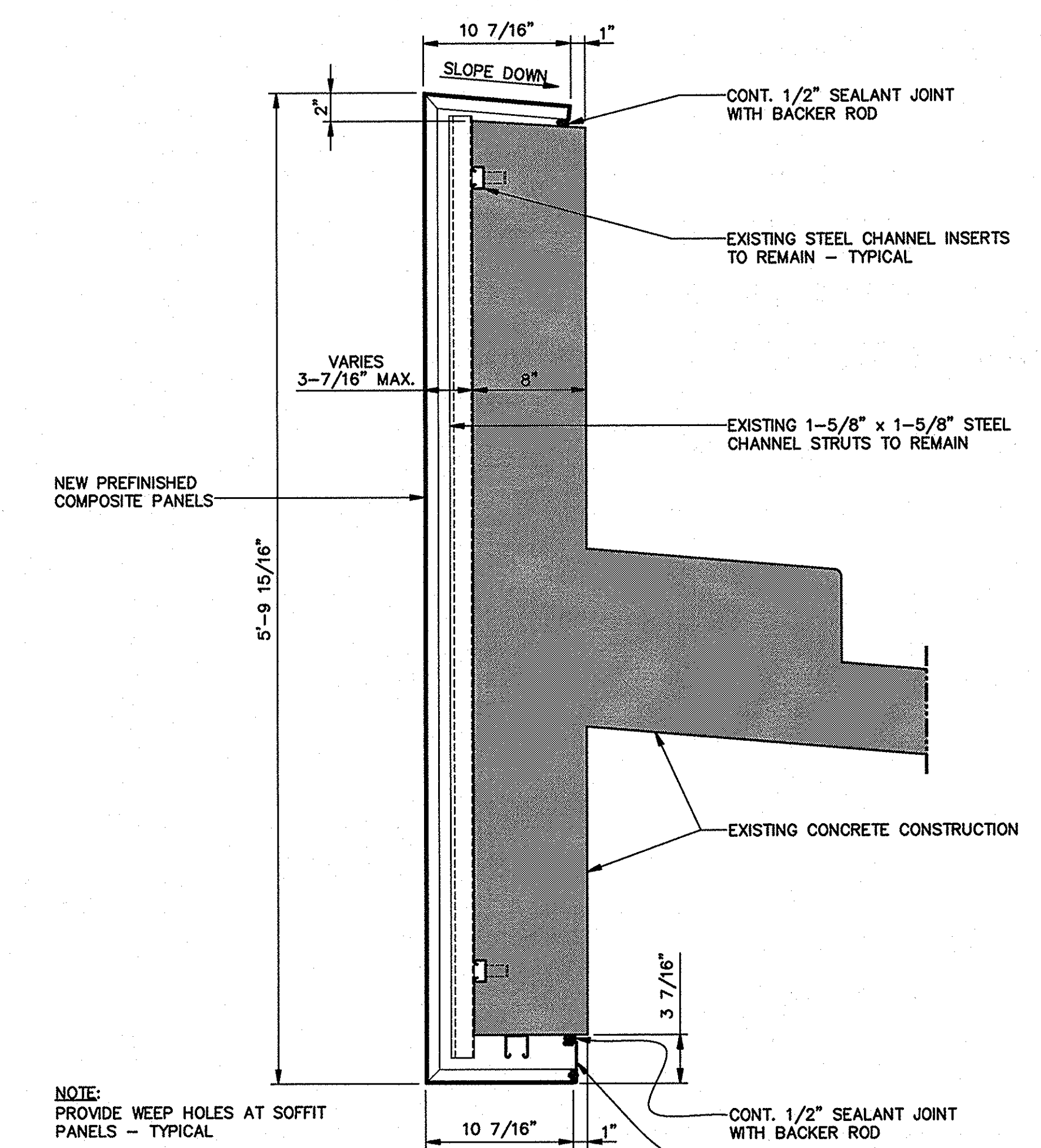
SCALE: 1-1/2" = 1'-0"



**C3** ISOMETRIC AT COLUMN A/5

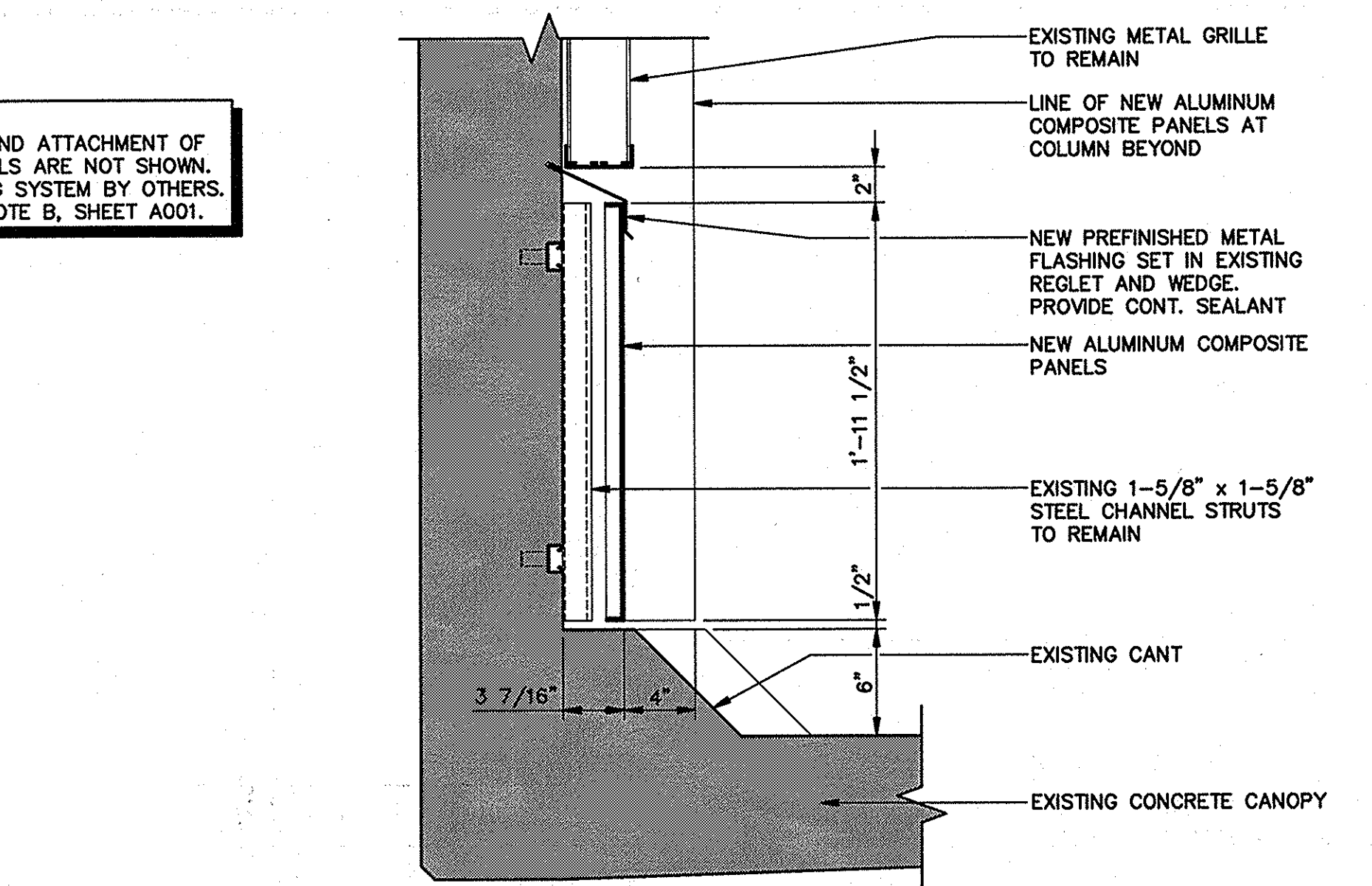
SCALE: 3/4" = 1'-0"

(LOOKING SOUTHEAST FROM TOP PARKING LEVEL)



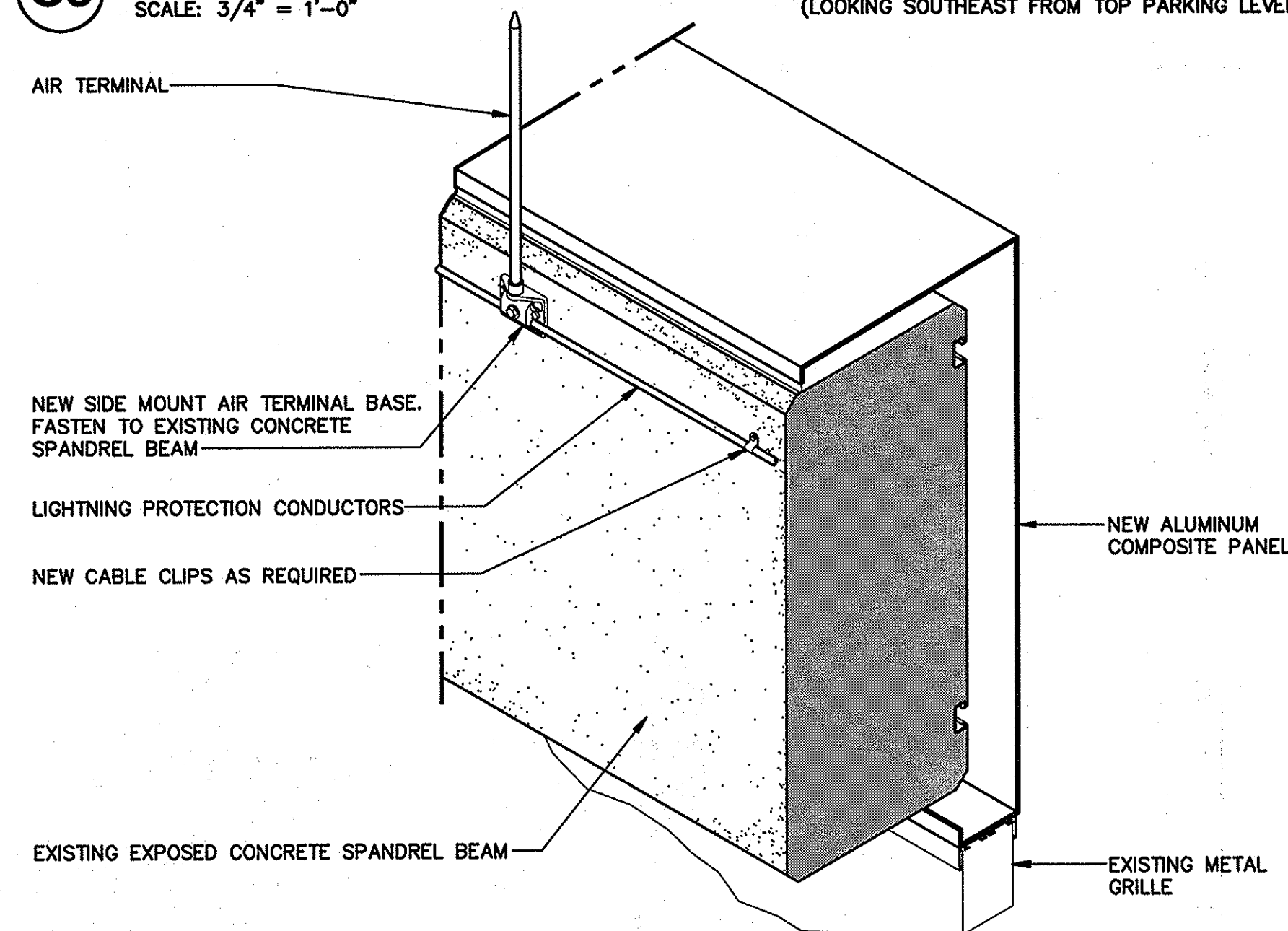
**B1** DETAIL AT RAMP ROOF

SCALE: 1-1/2" = 1'-0"



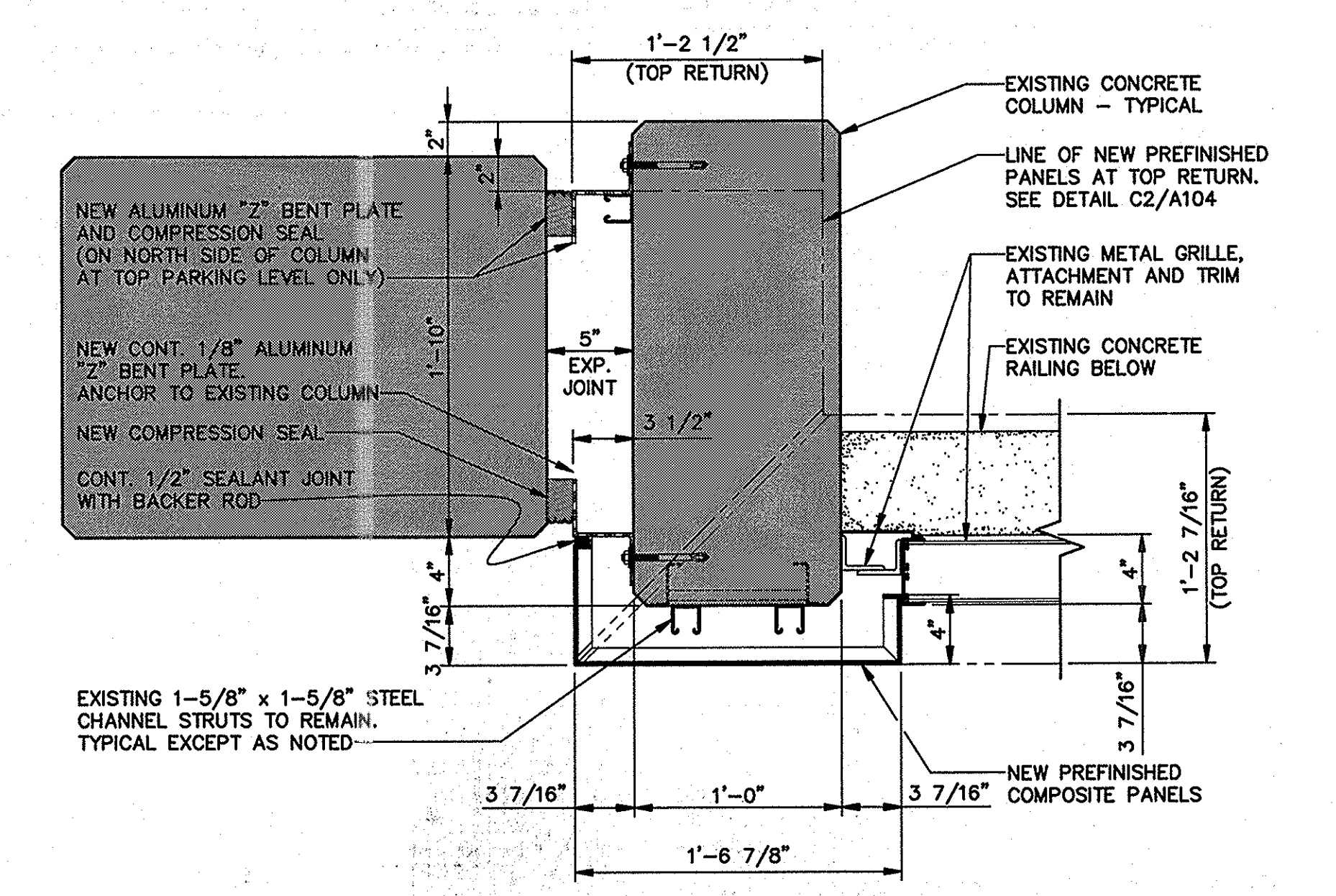
**B2** BOTTOM SILL PANEL DETAIL

SCALE: 1-1/2" = 1'-0"



**B3** LIGHTNING PROTECTION MOUNTING DETAIL

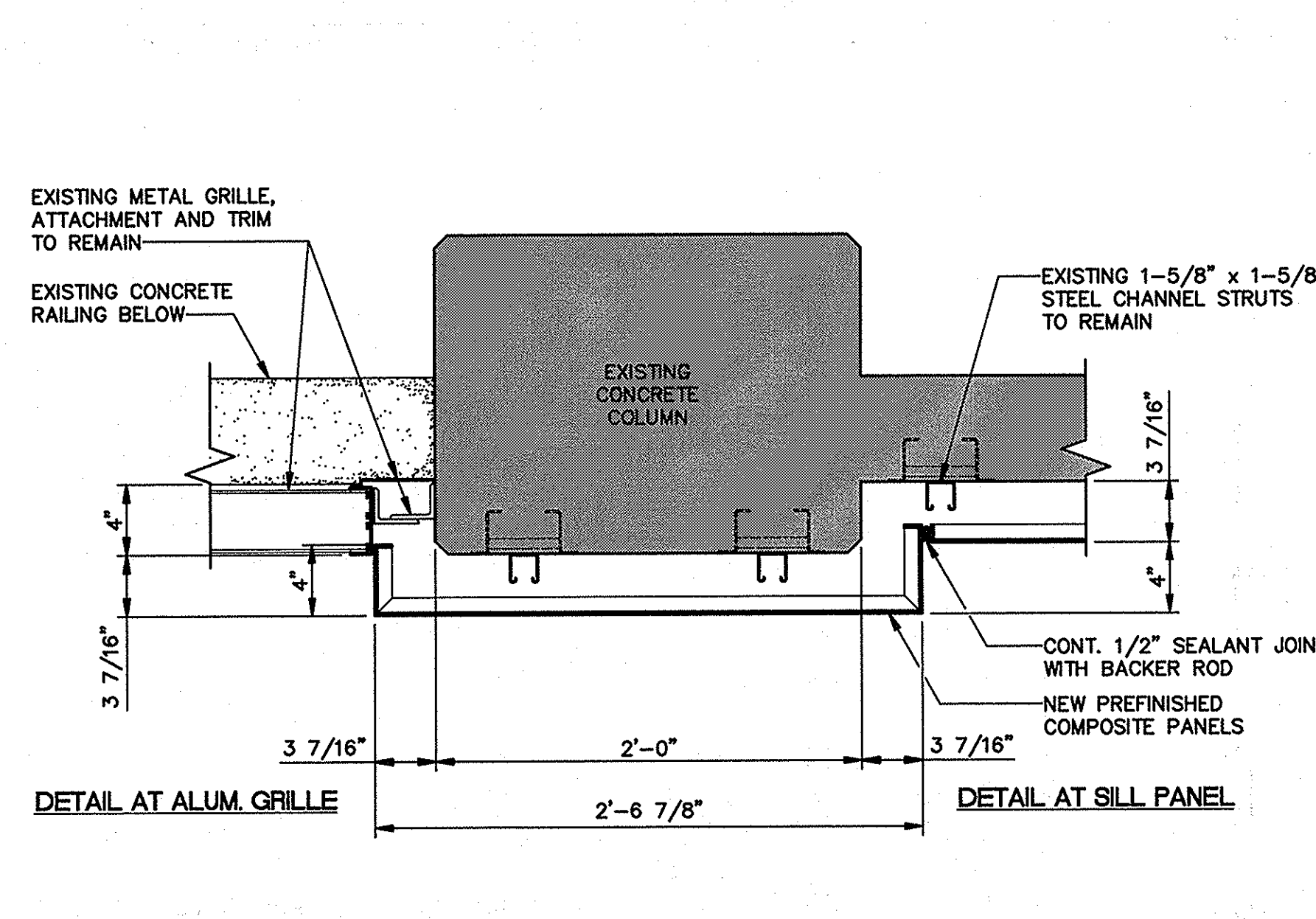
SCALE: 1-1/2" = 1'-0"



**A2** COLUMN DETAIL

SCALE: 1-1/2" = 1'-0"

COLUMN A/5



**A3** TYPICAL COLUMN DETAIL

SCALE: 1-1/2" = 1'-0"

**GENERAL NOTE:**  
ANCHORING SYSTEM AND ATTACHMENT OF NEW COMPOSITE PANELS ARE NOT SHOWN. DESIGN OF ANCHORING SYSTEM BY OTHERS. SEE CONSTRUCTION NOTE B, SHEET A001.